



Source: [petrochemfg.com/about](http://petrochemfg.com/about)

# Fasteners

We deal in fasteners across all industries such as :

- Petrochemical
- Oil & Gas
- Automotive
- Construction etc.



Source: [petrochemfg.com/about](http://petrochemfg.com/about)



Source: [autobeatonline.com](http://autobeatonline.com)



## COMPANY PROFILE



Source: [uni-protech.com.tw](http://uni-protech.com.tw)



**N.T AMO & SON**

Consulting & Trading



**N.T Amo & Son**  
*(A consulting & trading company)*

***WELCOMES YOU***

*Let's help you through price negotiation with Japanese stockiest/manufacturers to get the lowest prices in Japan without compromising on quality or delivery.*

---

**Address:** Ishikawa, Kanazawa, Japan.

**Phone:** +81 802 5393 930

**Email:** [info@ntamo.com](mailto:info@ntamo.com)

**Website:** <https://ntamo.com>

**Contact Person:** Engr. Amo Nurudeen (Civil & Environmental Engineer)

**Position:** CEO

# Works / Work Experiences

**At Cocoa Research Institute of Nigeria, Ibadan, Oyo State, Nigeria.**

Maintenance department

I did maintenance on farm machineries (tractors and tilling implements et cetera).

Food processing department

At the department of Food processing department, I was involved with a team in the processing of cocoa beans into wine, chocolate bar, liquid soap and more.



Source: crin.gov.ng, and publicdomainimages

# Works / Work Experiences

**Ministry of Works and Infrastructures,  
Secretariat, Alausa, Ikeja, Lagos State,  
Nigeria.**

I was tasked as a Supervisory Engineer to:

- ❑ Supervise the field workers of Julius Berger Nigeria on the redevelopment of Lagos-Badagry Expressway project.
- ❑ I participated in onsite activities such as soil exchange, sand filing and compaction, positioning of pre-cast JC barrier, casting of base of U-channel, blinding to receive JC barrier, placement of JC barrier on various sections of the site

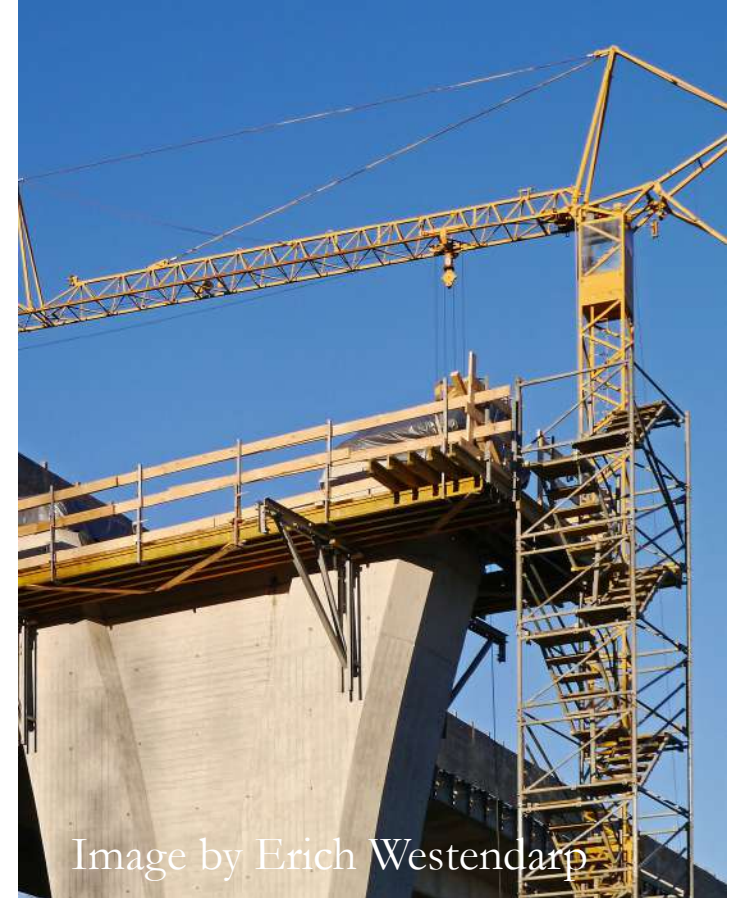


Image by Erich Westendarp

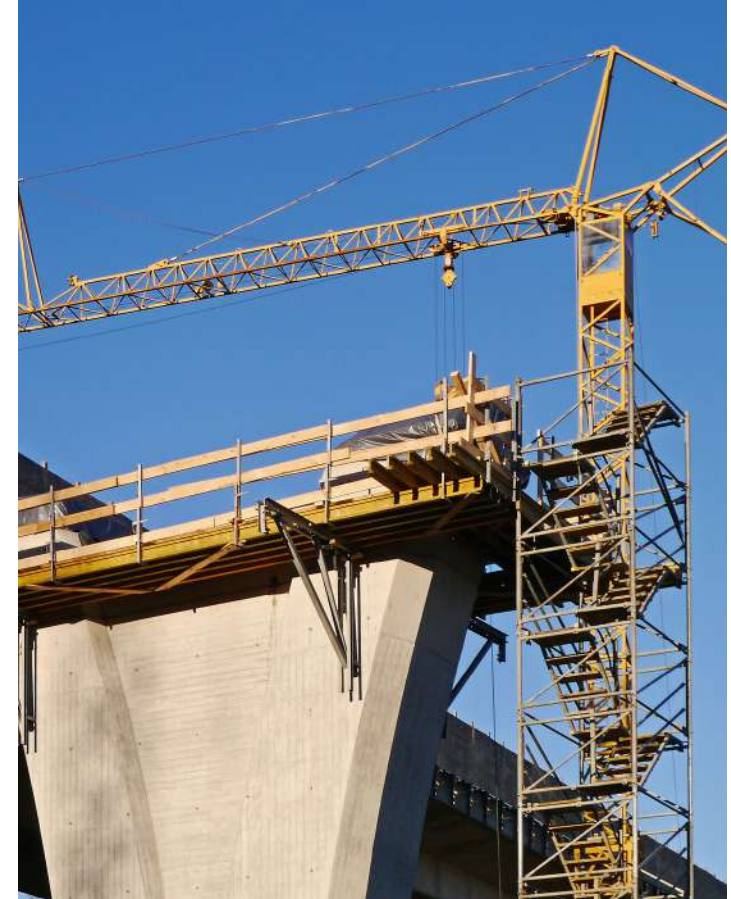
# Works / Work Experiences

**Federal Ministry of Agriculture & Rural Development, FCT, Abuja, Nigeria.**

Agricultural Engineer II:

As an Agricultural Engineer, my duty is to:

- Plan, coordinate, monitor and supervise all water activities/projects of the department.
- Inspect all solar street light installation projects, construction of bridges, rural road construction and culverts and other related assigned projects of the department.



# Works/Work Experiences

**Amo Nurudeen**

*CEO/Founder, Low Sugar Drinks & Products Ltd*

An online marketplace that promotes low sugar/calorie, zero calorie drinks and foods. It is a platform that makes it easier for health-conscious consumers to buy all their healthy foodstuffs all in one place.

For more info, please visit: <https://lowsugardrinks.com>



**LOW**  
**Sugar**  
**DRINKS**



# Works / Work Experiences

## **Fellow System Co., Ltd**

(Matsuyama City, Ehime Prefecture, Japan.)

- ❑ I studied android app/web development at their ICT laboratory. Some of the IT apps developed in Fellow System were strategy games, bicycle & meet-up and its application.







# Works / Work Experiences

---

**@ Meiwa Co., Ltd**  
Kanazawa City, Ishikawa Prefecture, Japan.



## Works/Work Experiences

I worked with a team to dry and convert organic waste such as leaves, wood to biochar. This is done when the dry organic waste is subjected to a temperature above 200 degrees (pyrolysis). This biochar can be applied as soil supplement.

---



# Introduction

---

## **N.T Amo & Son History**

Nurudeen T. Amo believes transparency could only be established when explanations and answers are clearly aligned between the parties involved.

# Business, Administrative & Contact Information

---

- **Business Name:** N.T Amo & Son
- **Business Type:** Family, Sole proprietorship
- **Email:** [info@ntamo.com](mailto:info@ntamo.com) (official), [tomiwaamo@gmail.com](mailto:tomiwaamo@gmail.com) (personal)
- **Phone:** +81 802 539 3930, +81 505 806 4722

# 2014

## Our Start

---

- Amo's first business venture (Low Sugar Drinks) is in the beverage industry. Low Sugar Drinks was first registered in 2014 under a reputable international domain name registrar.
- Since its founding in 2014 and incorporated in 2018 as an online marketplace, Low Sugar Drinks & Products Ltd has become a leading online retailer for low sugar/calorie, sugar free and natural drinks/products in Africa and Asia. For more info, please visit <https://lowsugardrinks.com>.

2015

## A Growing Ambition



- In 2013, Japanese Prime Minister Shinzo Abe announced the commencement of the ABE Initiative at the fifth Tokyo Conference on African Development (TICAD V) held in Yokohama, Japan.
- In 2015, Nurudeen T. Amo at 28 years old left Nigeria for Japan. He arrived in Tokyo unable to speak a word of Japanese. The young Amo enrolled for Master's degree program at Saitama University under the ABE Initiative Master's and Internship Program for Youth through JICA TOKYO.

The ABE Initiative aims to develop human resources in both public and private sectors.

On the 28-29<sup>th</sup> October, same year; Amo participated at the 1<sup>st</sup> ECOWAS-JAPAN BUSINESS FORUM 2015 @ Hyatt Regency Tokyo where he networked with top personalities in Government and Industries.



Nurudeen T. Amo observed that the Business Forum and many other business networking events organized during the course of ABE Initiative Program by the Japanese Government to enable the participants to gain insights into Japanese business culture and partnership opportunities have one thing in common “Radio Silent”. It is almost impossible to keep a business relationship after the first meeting, though business cards, talks and discussions and even emails are exchanged. It is also difficult to know if you are in agreement even though it appears a mutual understanding has been established at the networking events.





The experiences gathered by Nurudeen T. Amo during his 5 years of stay made him more interested in the thought process of a typical Japanese top manager coupled with unspoken business ethics deep rooted in Japanese culture which influences their decision-making process. A lot of healthy business relationship were forged and strengthened because of Amo's new focus of interest.

Nurudeen T. Amo is happily married to a Japanese wife and blessed with a son.



# What N.T Amo & Son does

---

- Amo helps Top Managers and Government Agencies to eliminate the frustration that arise from communication issues to ensure a smooth sourcing for Japan Quality Industrial Fasteners accompanying a confidential negotiation with Local Japanese manufacturers to obtain the best possible terms/price.

# Strategy

---

- **Vision statement:** N.T Amo & Son aims to be a leader at creating happiness and tranquility on every project across all industries.
- **Mission:** The mission of N.T Amo & Son is to source, direct confidential negotiation with Japanese manufacturers, export & deliver industrial goods such as fasteners, automotive, agricultural equipment etc. to clients.

# Business concept

---

- Amo aligns the focus and point of departure of the involving business parties.

# Products & Services

---

- **Products:** Industrial goods such as (corrosion-resistance fasteners, bolts, nuts etc.)
- **Services:** Amo manages the communication issues and obtains the best possible terms/price through a confidential negotiation with Japanese manufacturers.

A

## AVAILABLE PRODUCTS



Used Mobile Cranes



**Tractor**



**Dump Truck**



**Rice Cake Machine**



**Rice Processing Machine**



**Power Tiller**





**Color Sorter**



**Engine Generator**



**Portable Compressor**



**Toiletries**



**Dash Cam**



**Transceiver**



**Used Slot Machine**



**Belt Conveyor**



**Tires**



**Outboard Motor**



**Decanter  
Centrifuge**



**Used Food  
Processing machine**



**Car Battery**



**Hydraulic  
Breaker**



**Scaffolding  
(Restrictions apply)**

System	Product Name
Cooling System	Electrical Water Pump
	Water Pump
	Fan Clutch
Engine Drive System	Tensioner & Idler Bearing
Drive Line Components	Universal Joint
Steering & Suspension Parts	Ball Joint
	Cross Rod
	Inner Shaft(Arm Shaft)
	Side Rod
	Tie-Rod End
	Pitman Arm
	Stabilizer Link
	Control Arm
	Idler Arm
	Inner Shaft
	Rack End
	Steering Joint
	Axle Parts
Bearing	Single Ball Bearing
	Water Pump Bearing
	Clutch Release Bearing



System	Product		
Auto Parts	Distributor Cap	 	
	Distributor Rotor		
	Ignition Coil		
	Starter switch		
Suspension	Suspension Rubber		
Propeller shaft	Center Bearing Support		
Steering	Steering Parts	 	
Oil Pressure	Oil Pressure Sender Unit		
Engine Parts	Piston Ring Set		
	Cylinder Liners		
	Glow Plug		
	Thermostat		
Radiator	Radiator Cap		



## DIMENSIONS

LxWxH (cm)	200x115x160
Weight (kg)	2500



## MARINE DIESEL ENGINE

Reference number	4469
Brand	Caterpillar
Model	D343
Power	360 HP
RPM	1800
Serial number	33b7926
General condition	Checked, run tested, good condition

## SPECIFIC INFORMATION

Flywheel housing	Sae-0
Flywheel	14 inch
Governor	Mechanical
Exhaust system	Water cooled
Turbo	Dry
Cooling system	Keel cooled
Starter	1 x 24v

## SPECIFIC FEATURES

Panel	No
Raw water pump	Yes
Expansion tank	Yes





## CATERPILLAR 3306

### MARINE DIESEL ENGINE

Reference number	11574
Brand	Caterpillar
Model	3306 DITA AAAC
Power	240 HP
RPM	2200
Serial number	1bm00722
General condition	Checked, run tested, good condition

### SPECIFIC INFORMATION

Flywheel housing	Sae-2
Flywheel	11,5 inch
Governor	Mechanical
Exhaust system	Dry
Turbo	Dry
Cooling system	Air cooled
Starter	1 x 24v

### SPECIFIC FEATURES

Panel	No
Expansion tank	No
Fan	Yes

### DIMENSIONS

LxWxH (cm)	185x85x140
Weight (kg)	980



# CATERPILLAR C12



# CATERPILLAR C12

## MARINE DIESEL ENGINE

Reference number	11698
Brand	Caterpillar
Model	C12
Power	345 HP
RPM	1800
Serial number	Nf102044
General condition	Running take out, good condition
Year of manufacturing generator	2012

## SPECIFIC INFORMATION

Flywheel housing	Sae-1
Flywheel	14 inch
Governor	Electrical
Exhaust system	Water cooled
Turbo	Water cooled
Cooling system	H-e cooled
Starter	1x 24v

## SPECIFIC FEATURES

Panel	No
Raw water pump	Yes
Expansion tank	Yes

## DIMENSIONS

LxWxH (cm)	200x100x150
Weight (kg)	1320 kg



# CATERPILLAR 3408 DITA



# CATERPILLAR 3408 DITA

## MARINE GENERATOR DIESEL ENGINE

Reference number	11671
Brand	Caterpillar
Model	3408
Power	500 HP
RPM	1500
Serial number	099u-09613
General condition	Checked, run tested, good condition

## SPECIFIC INFORMATION

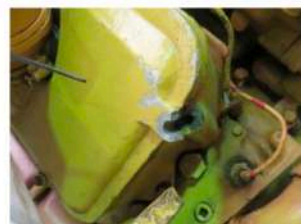
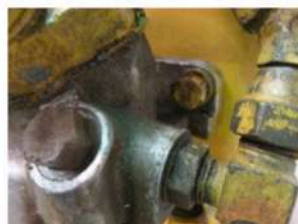
Flywheel housing	Sae-1
Flywheel	14 inch
Governor	Mechanical
Exhaust system	Water cooled
Turbo	Water cooled
Cooling system	Keel cooled
Starter	1 x 24v

## SPECIFIC FEATURES

Panel	No
Raw water pump	No
Expansion tank	Yes

## DIMENSIONS

LxWxH (cm)	190x130x160
Weight (kg)	1700



# CATERPILLAR 3412E



# CATERPILLAR 3412E

## MARINE DIESEL ENGINE

Reference number	11704
Brand	Caterpillar
Model	3412E
Power	600 HP
RPM	1800
Serial number	9pw0878
General condition	Running take out
Running hours	22584
Yom	2004
Arr.nr	183-3882

## SPECIFIC INFORMATION

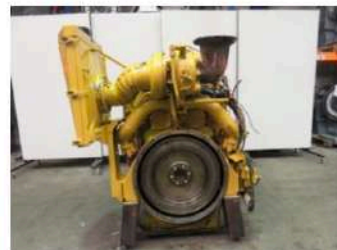
Flywheel housing	Sae-0
Flywheel	18 inch
Governor	Electronical (computer)
Exhaust system	Water cooled
Turbo	Water cooled
Cooling system	Keel cooled
Starter	1 x 24v

## SPECIFIC FEATURES

Panel	Yes
Expansion tank	Yes

## DIMENSIONS

LxWxH (cm)	200x145x180
Weight (kg)	2550



# CATERPILLAR 3508 DITA



# CATERPILLAR 3508 DITA

## MARINE DIESEL ENGINE

Reference number	11731
Brand	Caterpillar
Model	3508 DITA
Power	1050 HP
RPM	1800
Serial number	7sm00061
General condition	Running take out

## SPECIFIC INFORMATION

Flywheel housing	Sae-0
Flywheel	18 inch
Governor	Electrical
Exhaust system	Dry
Turbo	Dry
Cooling system	Keel cooled
Starter	2 x 24v

## SPECIFIC FEATURES

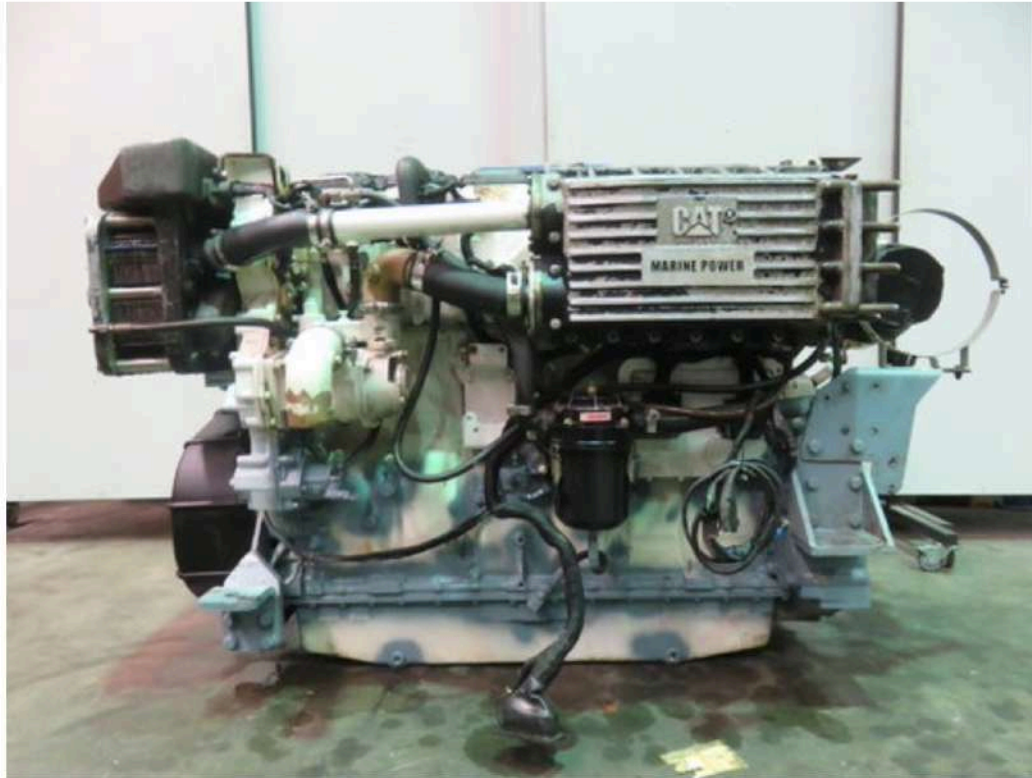
Panel	Yes
Raw water pump	Yes
Expansion tank	Yes
Other features	Front pto

## DIMENSIONS

LxWxH (cm)	270x175x200
Weight (kg)	6162



# CATERPILLAR C18



# CATERPILLAR C18

## MARINE DIESEL ENGINE

Reference number	11732
Brand	Caterpillar
Model	C18C-TA
Power	725 HP
RPM	2100
Serial number	C1j00681
General condition	Running take out
Year of manufacturing	2010

## SPECIFIC INFORMATION

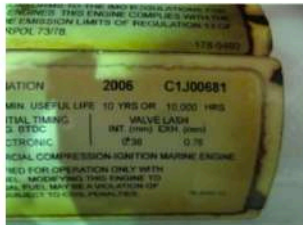
Flywheel housing	Sae-1
Flywheel	14 inch
Governor	Electrical
Exhaust system	Water cooled
Turbo	Water cooled
Cooling system	H-e cooled
Starter	1 x 24v

## SPECIFIC FEATURES

Panel	Yes
Raw water pump	Yes
Expansion tank	Yes

## DIMENSIONS

LxWxH (cm)	200x120x150
Weight (kg)	2000



# CATERPILLAR 3406E



# CATERPILLAR 3406E

## MARINE ENGINE

Reference number	11679
Brand	Caterpillar
Model	3406E DITA
Power	700 HP
RPM	2200
Serial number	9wr02540
General condition	Checked, run tested, excellent condition
Running hours	5683

## SPECIFIC INFORMATION

Flywheel housing	Sae-1
Flywheel	14 inch
Governor	Electrical (computer)
Exhaust system	Water cooled
Turbo	Water cooled
Cooling system	He cooled
Starter	1 x 24v

## SPECIFIC FEATURES

Panel	Yes
Expansion tank	No
Raw waterpump	Yes

## DIMENSIONS

LxWxH (cm)	210x110x120
Weight (kg)	1670



# CATERPILLAR 3406E (PARTS ENGINE)



# CATERPILLAR 3406E (PARTS ENGINE)

## MARINE ENGINE

Reference number	11680
Brand	Caterpillar
Model	3406E DITA
Power	700 HP
RPM	2200
Serial number	9wr02802
General condition	Good for parts, complete ( cylinderhead with injectors are sold)
Running hours	12146

## SPECIFIC INFORMATION

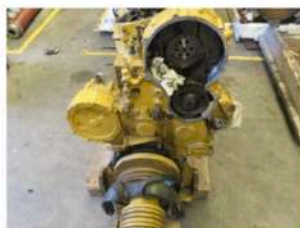
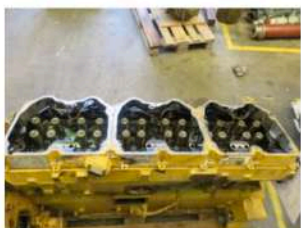
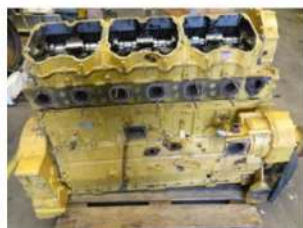
Flywheel housing	Sae-1
Flywheel	14 inch
Governor	Electrical (computer)
Exhaust system	Water cooled
Cooling system	He cooled
Starter	1 x 24v

## SPECIFIC FEATURES

Panel	Yes
Expansion tank	No
Raw waterpump	Yes

## DIMENSIONS

LxWxH (cm)	180x120x160
Weight (kg)	1500





# CATERPILLAR 3412C DITTA



# CATERPILLAR 3412C DITTA

## MARINE ENGINE

Reference number	11771
Brand	Caterpillar
Model	3412C
Power	825 HP
RPM	2100
Serial number	7bl000190
General condition	Running take out
Running hours	Approx. 25.000 hrs.
Fuel	Diesel

## SPECIFIC INFORMATION

Flywheel housing	Sae-1
Flywheel	14 inch
Governor	Mechanical
Exhaust system	Water cooled
Turbo	Water cooled
Cooling system	H-e cooled
Starter	1x 24v

## SPECIFIC FEATURES

Panel	Yes
Raw water pump	Yes
Expansion tank	Yes

## DIMENSIONS

LxWxH (cm)	210x135x140
Weight (kg)	2560



# CATERPILLAR 3412C DITTA



# CATERPILLAR 3412C DITTA

## MARINE ENGINE

Reference number	11772
Brand	Caterpillar
Model	3412C
Power	825 HP
RPM	2100
Serial number	7bl000191
General condition	Running take out
Fuel	Diesel
Running hous	25895

## SPECIFIC INFORMATION

Flywheel housing	Sae-1
Flywheel	14 inch
Governor	Mechanical
Exhaust system	Water cooled
Turbo	Water cooled
Cooling system	H-e cooled
Starter	1x 24v

## SPECIFIC FEATURES

Panel	No
Raw water pump	Yes
Expansion tank	Yes

## DIMENSIONS

LxWxH (cm)	220x140x160
Weight (kg)	2560



# CATERPILLAR 3196



# CATERPILLAR 3196

## MARINE ENGINE

Reference number	11819
Brand	Caterpillar
Model	3196
Power	660 HP
RPM	2300
Serial number	2xr04541
General condition	Running take out ?
Year of manufacturing generator	1994
Fuel	Diesel

## SPECIFIC INFORMATION

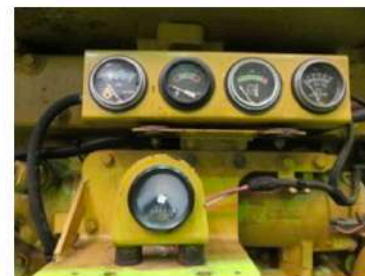
Flywheel housing	Sae-1
Flywheel	14 inch
Governor	Electrical
Exhaust system	Water cooled
Turbo	Water cooled
Cooling system	H-e cooled
Starter	1x 24v

## SPECIFIC FEATURES

Panel	Yes
Raw water pump	Yes
Expansion tank	Yes

## DIMENSIONS

LxWxH (cm)	190x110x135
Weight (kg)	1300



# CATERPILLAR 3196



# CATERPILLAR 3196

## MARINE ENGINE

Reference number	11820
Brand	Caterpillar
Model	3196
Power	660 HP
RPM	2300
Serial number	2xr04542
General condition	Running take out ?
Year of manufacturing generator	1994
Running hours	99021
Fuel	Diesel

## SPECIFIC INFORMATION

Flywheel housing	Sae-1
Flywheel	14 inch
Governor	Electrical
Exhaust system	Water cooled
Turbo	Water cooled
Cooling system	H-e cooled
Starter	1x 24v

## SPECIFIC FEATURES

Panel	Yes
Raw water pump	Yes
Expansion tank	Yes

## DIMENSIONS

LxWxH (cm)	190x110x135
Weight (kg)	1300



# Business competitiveness

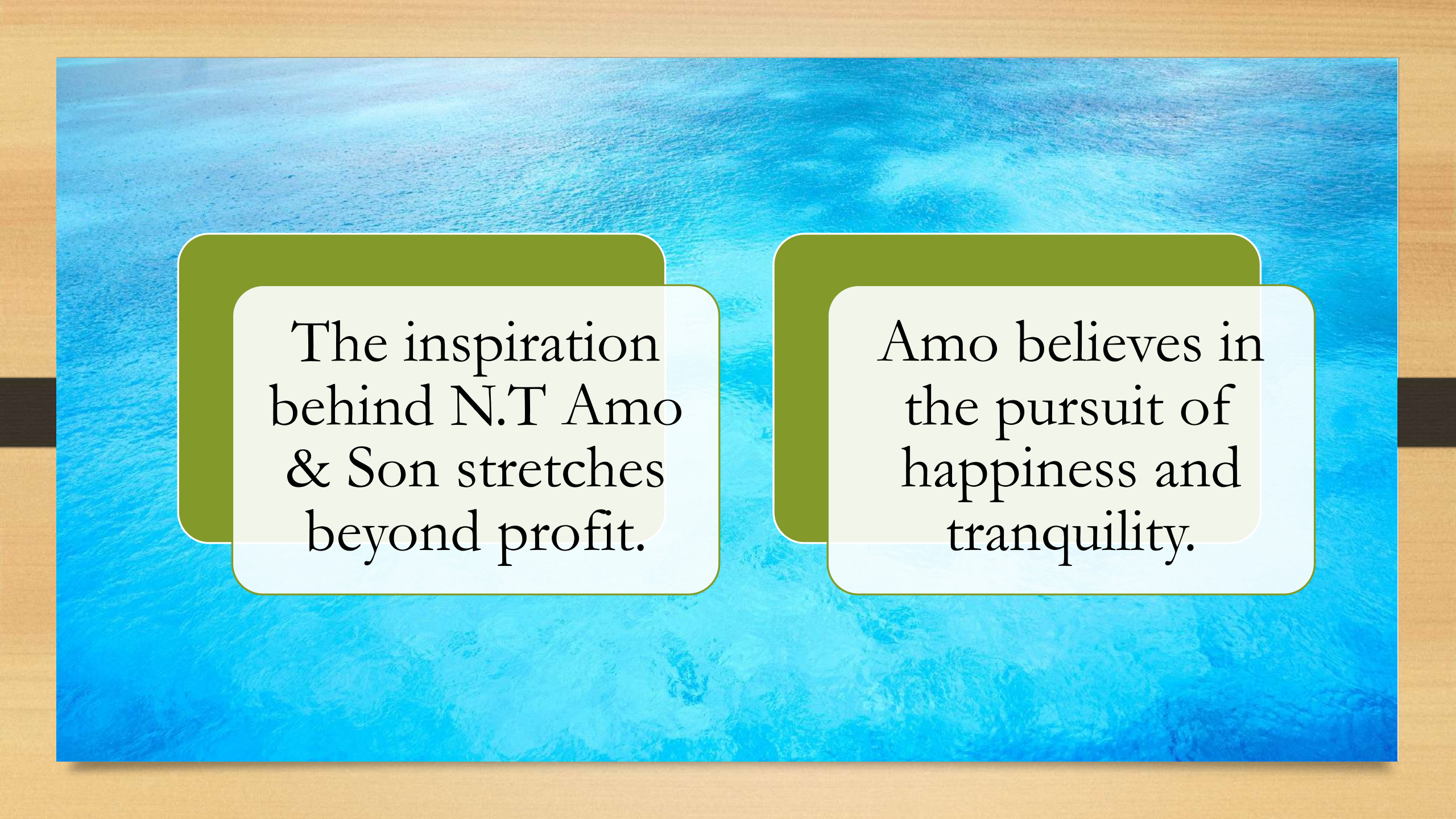
---

- Amo focuses on client's satisfaction. Happiness and tranquility in any project undertaken is our priority.

# Management & Ownership

---

- **Management structure:** A family run business
- **Ownership:** The final decision is taken by the CEO
- **Partnership:** Amo partners with two Japanese trading companies located in Tokyo and Osaka. They are involved in price/terms negotiation. Amo employs his connections in the Government of Japan where necessary.



The inspiration  
behind N.T Amo  
& Son stretches  
beyond profit.

Amo believes in  
the pursuit of  
happiness and  
tranquility.